



## Floor Plan

Tower A - Level 0-19

Tower B - Level 0-19

Tower C - Level 0-19

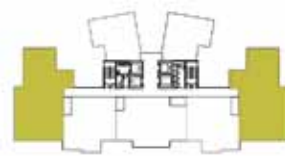
3 + 1 rooms

Built-up area – 1,972 sq ft.

Structure	: Reinforced concrete	
Wall	: Reinforced concrete / brick / CSR block	
Roof Covering	: Concrete roof / Metal decking / Roof tiles	
Ceiling	: Internal	- Flat sheet plaster ceiling
Windows	: Aluminium frame with glass windows / adjustable window where applicable	
Doors	: Entrance	- Decorative timber door
	: Internal doors	- Flush doors
	: Balcony	- Aluminium framed sliding glass door
	: Bath at Yard / utility room	- Flush / PVC Door
Ironmongery	: Selected quality locksets	
Wall Finishes	: Internal walls	- Emulsion paint
	: External walls	- Acrylic Paint
	: Bathrooms	- Ceramic tiles
	: Kitchen	- Emulsion paint
Floor Finish	: Living & Dining	- Porcelain floor tiles
	: Bedrooms (except utility / room)	- Laminated wooden flooring / floor board
	: Kitchen / Yard	- Porcelain tiles
	: Bathrooms	- Ceramic tiles
	: Utility Room	- Ceramic or other tiles
	: Other areas	- Porcelain floor tiles
Sanitary and plumbing fittings	: Master Bathroom	- WC, long bath, shower, hand basin
	: Bathroom 2	- WC, long bath, shower, hand basin
	: Other bathrooms	- WC, shower, hand basin
	: Kitchen	- Sink with pillar tap
Electrical Installation	: Lighting points	- 21
	: Ceiling fan point	- 2
	: 13amp Power point	- 16
	: Water heater Point	- 1
	: Telephone outlet	- 1
	: SAT/TV Outlet	- 2
	: Door Bell Point	- 1
	: Intercom System	- 1
	: Air-Conditioning Point c/w piping	- 2

PANORAMIC VIEW  
183.2 sm. 1,972 sf.

SCALE 1:200



Key Plan